

Climate
Control

IMI TA

KOMBI



Metal pipe couplings

Compression coupling for metallic pipes

KOMBI

A flexible compression coupling for metallic pipes, soft and hard copper pipes and soft steel pipes in tap water and heating systems.

Key features

External threads

For faster and easier installation, the KOMBI is equipped with external pipe threads, enabling it to connect to most IMI TA valves in DN 10-20, including radiator, ball and balancing valves.



Technical description

Applications:

Tapwater and heating systems.
Process systems where the media does not affect the incoming material.

Functions:

Compression coupling for soft and hard copper pipes (SS-EN 1057) and soft steel pipes.

Pressure class:

PN 16

Temperature:

Max. working temperature: 100°C

Material:

Thrust screw: AMETAL® or brass
Cone: Brass

AMETAL® is the dezincification resistant alloy of IMI.

Surface treatment:

Thrust screws nickel plated.

Installation

The **KOMBI** for metallic pipes, copper and soft steel pipes, consists of thrust screw and a cone.

The thrust screws have external threads and fit most IMI TA valves of DN 10-20 and such as:

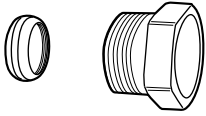
- Thermostatic valves
- Return valves
- Ball valves
- Balancing valves
- Relief valves
- Circulation valves

Installation instruction

Make sure to push the pipe into the coupling as far as it will go. Tighten the thrust screw by hand first. Then tighten with an adjustable wrench.

Recommended tightening: 1 turn.

Articles



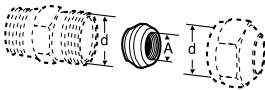
KOMBI

External pipe threads on thrust screw	For pipes, diameter	EAN	Article No
G3/8	10	7318792874604	53 235-104
G3/8	12	7318792874703	53 235-107
G1/2	10	7318792874901	53 235-109
G1/2	12	7318792875007	53 235-111
G1/2	14	7318792875106	53 235-112
G1/2	15	7318792875205	53 235-113
G1/2	16	7318792875304	53 235-114
G3/4	15	7318792875403	53 235-117
G3/4	18	7318792875601	53 235-121
G3/4	22	7318792875700	53 235-123

Plug for KOMBI: TA 322.

Support bush should be used TA 320 for soft and semi-hard copper pipes and TA 321 for steel pipes.

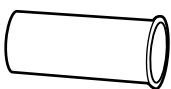
Accessories



TA 322 Plug

Non-plated (yellow)

Size	d	A	EAN	Article No
6 - 12	G3/8	G1/8	7318793629302	53 322-012
8 - 16	G1/2	G1/4	7318793629401	53 322-015
10 - 22	M28x1,5	G3/8	7318793705501	53 322-022



TA 320 Support bush AMETAL®

Copper pipes

For pipe size	EAN	Article No
10x0,8	7318793762405	53 320-010
10x1,0	7318793762504	53 320-110
12x1,0	7318793762702	53 320-012
15x1,0	7318793763105	53 320-015
15x1,2	7318793763204	53 320-315
16x1,0	7318793763303	53 320-016
18x1,0	7318793763402	53 320-018
18x1,2	7318793763501	53 320-318
22x1,0	7318793763600	53 320-022
22x1,5	7318793763709	53 320-322



The products, texts, photographs, graphics and diagrams in this document may be subject to alteration by IMI without prior notice or reasons being given. For the most up to date information about our products and specifications, please visit climatecontrol.imiplc.com