

Climate
Control

IMI TA

FPL-MT



Alu/PEX pipe couplings

Compression coupling for Alu/PEX pipes

FPL-MT

This is a supremely flexible compression coupling for Alu/PEX pipes in heating, cooling and tap water systems. The same body fits up to several sizes, ensuring quick and easy installation and saving money by reducing storage space.

Key features

Comprehensive range

For optimum flexibility and faster installation, the FPL-MT is available in a Dy range of 14-16 mm.

AMETAL® construction

Dezincification-resistant alloy that guarantees a longer coupling lifetime, and lowers the risk of leakage.

Cut cone

For straightforward installation.



Technical description

Applications:

Heating and cooling systems.
Tapwater systems.
Process systems where the media does not affect the incoming material.

Temperature:

Max. working temperature: 95°C or the pipe temperature.

Surface treatment:

Delivered as surface treated (chrome/nickel plated). See each product table.

Functions:

FPL-MT compression coupling for Alu/PEX pipes.

Material:

Parts which are subject to water contact:
AMETAL®
Support bush: Brass CW724R or AMETAL®
O-rings: EPDM rubber

Dimensions:

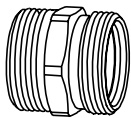
Dy 14-16 mm

AMETAL® is the dezincification resistant alloy of IMI.

Pressure class:

PN 6/PN 10

Possible combinations for FPL-MT



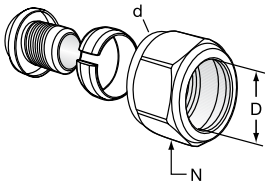
Body with thread (d)	can be adapted to fit pipe from
M22x1,5	14, 16 mm

Wall thickness for the pipe - see each product tabel.

NOTE: The FPL-bodies are suitable for FPL, FPL-PX and FPL-MT couplings.

Components in the FPL-MT system are NOT compatible with components of different make.

M22x1.5



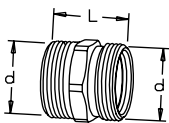
Connection set FPL-MT with O-ring

Nickel plated

d	L ¹	For MT-pipe D	N	EAN	Article No
M22x1,5	14	14x2,0	25	7318792963308	53 693-414
M22x1,5	14	16x2,0 *	25	7318792963100	53 693-116

1) Over all length.

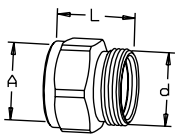
*) Support bush made of brass CW724R.



TA 351 Coupling

Nickel plated

d	L	EAN	Article No
M22x1,5	25	7318793630100	53 351-416

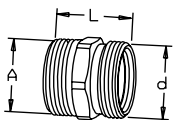


TA 356 Straight

Female

Nickel plated

A x d	L	EAN	Article No
G1/2 x M22x1,5	26	7318793636607	53 356-416

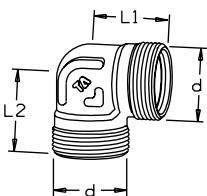


TA 358 Straight

Male

Nickel plated

A x d	L	EAN	Article No
R1/2 x M22x1,5	30	7318793637505	53 358-416

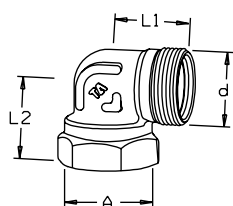


TA 361 Elbow

Nickel plated

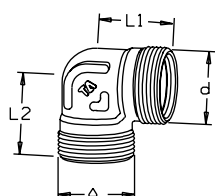
d	L1	L2	EAN	Article No
M22x1,5	22	22	7318793630902	53 361-416

R = Male conical thread.


TA 363 Elbow
 Female

Nickel plated

A x d	L1	L2	EAN	Article No
G1/2 x M22x1,5	22	24	7318793638205	53 363-416


TA 354 Elbow
 Male

Nickel plated

A x d	L1	L2	EAN	Article No
R1/2 x M22x1,5	22	24	7318793635600	53 354-416

R = Male conical thread.