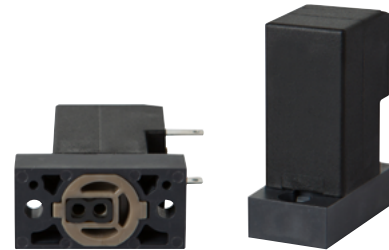


15 mm MICROSOL 2/2 MS

Media separated solenoid valve

- 2/2 NC
Media separated
Manifold mounting
- Low internal volume
- Compact design
- High flow to size ratio
- High pressure capability



Technical features

Medium:

Neutral or aggressive gases and liquids

Operation:

Direct acting 2-way media separated valves, normally closed

Operating pressure:

0 ... 10 bar (0 ... 146 psi)
Details below

Flow:

kv: 0,25 ... 0,8 l/min
10 ... 33 l/min at $\Delta p = 2$ bar (29 psi) at +20°C (+68°F)

Mounting:

Manifold

Orifice:

0,8 ... 2 mm (0,031" ... 0,079")

Weight:

30 g

Ambient/media temperature:

+5 ... +50°C (+41 ... +122°F)
Air supply must be dry enough to avoid ice formation at temperatures below +2°C (+35°F).

Materials:

Body in contact with media: PVDF, PEEK
Seal and diaphragm material in contact with media: FPM, FFPM, EPDM

Electrical details

| | |
|--|---------------------|
| Voltage | 24 V d.c. |
| Voltage range | -10% ... +15% |
| Power consumption | 2 W |
| Electrical insulation | 1500 V a.c. |
| Duty cycle | 100% E.D. |
| Insulation class | F (155°C) |
| Protection class according to EN 60529 | IP51 with connector |

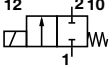
Following options on request

| |
|---|
| Pneumatic configuration (latching) |
| Operating pressure (also vacuum) |
| Materials |
| Voltage |
| Pneumatic port allocation |
| Power consumption |
| Electrical connections (300 mm flying leads, connector types) |
| Coil orientation |
| Protection class |

Embedded electronics options

| |
|---|
| Integrated pulse width modulation (PWM) |
| Reverse polarity protection |

Technical data – standard models

| Symbol | Orifice | Operating pressure | | Back pressure | | kv *1) | Seal Material | Model |
|---|---------|--------------------|-----------|---------------|-----------|---------|---------------|-----------------------|
| | (mm) | (bar) | (psi) | (bar) | (psi) | (l/min) | | |
|  | 0,8 | 0 ... 10 | 0 ... 145 | 0 ... 1,8 | 0 ... 26 | 0,25 | PVDF/FPM | 01-213E-01-51+EHP+AYZ |
| | 0,8 | 0 ... 10 | 0 ... 145 | 0 ... 1,8 | 0 ... 26 | 0,25 | PVDF/EPDM | 01-213E-01-55+EHP+AYZ |
| | 0,8 | 0 ... 6 | 0 ... 87 | 0 ... 0,5 | 0 ... 7,2 | 0,25 | PEEK/FFPM | 01-213E-01-B6++AYZ |
| | 1,2 | 0 ... 6 | 0 ... 87 | 0 ... 1,8 | 0 ... 26 | 0,55 | PVDF/FPM | 01-213E-02-51+EHP+AYZ |
| | 1,2 | 0 ... 6 | 0 ... 87 | 0 ... 1,8 | 0 ... 26 | 0,55 | PVDF/EPDM | 01-213E-02-55+EHP+AYZ |
| | 1,2 | 0 ... 2,5 | 0 ... 36 | 0 ... 0,5 | 0 ... 7,2 | 0,55 | PEEK/FFPM | 01-213E-02-B6++AYZ |
| | 1,6 | 0 ... 4,5 | 0 ... 65 | 0 ... 1,6 | 0 ... 23 | 0,65 | PVDF/FPM | 01-213E-03-51+EHP+AYZ |
| | 1,6 | 0 ... 4,5 | 0 ... 65 | 0 ... 1,6 | 0 ... 23 | 0,65 | PVDF/EPDM | 01-213E-03-55+EHP+AYZ |
| | 1,6 | 0 ... 1,8 | 0 ... 26 | 0 ... 0,5 | 0 ... 7,2 | 0,65 | PEEK/FFPM | 01-213E-03-B6++AYZ |
| | 2,0 | 0 ... 3,5 | 0 ... 50 | 0 ... 1,6 | 0 ... 23 | 0,80 | PVDF/FPM | 01-213E-04-51+EHP+AYZ |
| | 2,0 | 0 ... 3,5 | 0 ... 50 | 0 ... 1,6 | 0 ... 23 | 0,80 | PVDF/EPDM | 01-213E-04-55+EHP+AYZ |
| | 2,0 | 0 ... 1,0 | 0 ... 14 | 0 | 0 | 0,80 | PEEK/FFPM | 01-213E-04-B6++AYZ |

*1) Cv - Value in [gal/min] = kv x 0,07

Accessories

Mounting plate with M5 thread
PVDF – 1 position



S010.1998

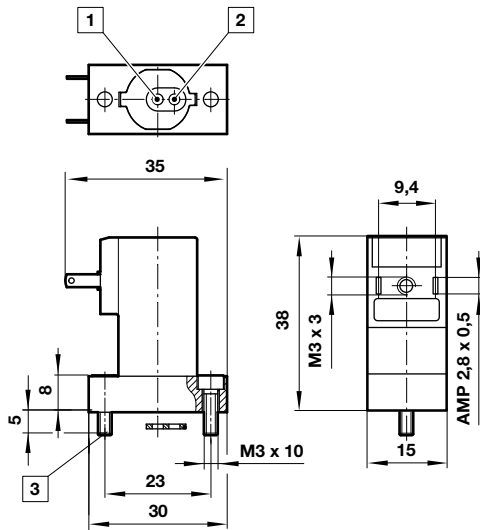
Electrical connection

Electrical connector MPM 9,4 mm
industry standard (C192) to mate
AMP spade 2,8 x 0,5 mm



N050.1456

Dimensions

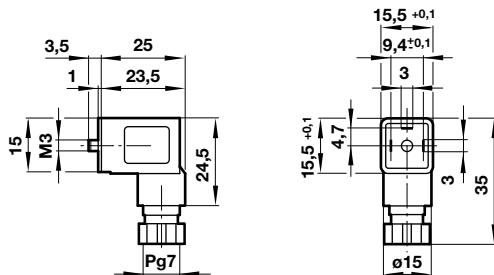


- 1 Inlet \varnothing 2 mm
- 2 Outlet \varnothing 2,4 mm
- 3 Mounting screw

All solenoids are supplied with mounting screws and gasket.

Electrical connector

Model: N050.1456



Warning

These products are intended for use in neutral or aggressive gases and liquids only. Do not use these products where pressures and temperatures can exceed those listed under »**Technical features**«.

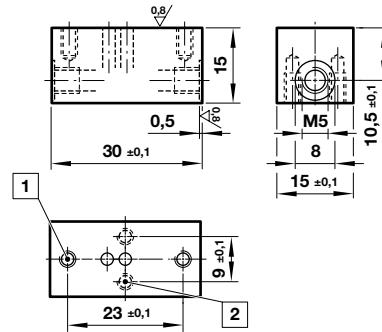
Before using these products with fluids other than those specified, for non-industrial applications, life-support systems, or other applications not within published specifications, consult IMI FAS.

Through misuse, age, or malfunction, components used in fluid power systems can fail in various modes.

Mounting plate

Model: S010.1998

Dimensions in mm
Projection/first angle



- 1 Valve mount threads
- 2 Threads for mounting screws – M3 x 6 mm deep